

Your Energy Costs: A Room-By-Room Guide

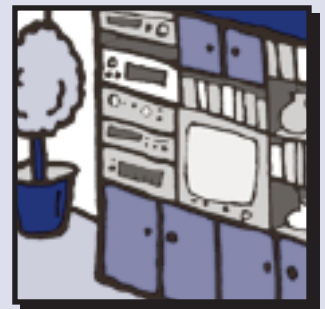
The More You Know, The More You Can Save.

We hope this guide will give you the information you need to help manage your energy costs. It lists common household appliances, gadgets and other things in and around your home which use energy. For example, clocks run all day, every day, while refrigerators cycle on and off to maintain a fixed temperature. Other items, like curling irons and vacuum cleaners, may only run a few hours per week.

Your cost to run these household items depends on the overall amount of energy you use. Residential electric rates are tiered, and the price per kilowatt-hour (kWh) increases as you use more energy. For the purposes of this guide, we have provided information based on average energy costs for “low-use” and “high-use” households. Determine if your household is low-use or high-use by looking at your most recent bill. If you are using over 130% of your baseline electric allowance, you can consider yourself a high-use household.

This guide will give you a good idea of where you’re spending your energy and your money. If you have any questions, or would like more information, give us a call at 1-800-411-SDGE (7343).

Helping you understand and manage your energy costs is one of the ways that SDG&E strives to provide exceptional customer service.



“Low-use” electric cost estimates reflect a rate of \$0.15 per kWh.

“High-use” electric cost estimates reflect a rate of \$0.25 per kWh.

Natural gas estimates are based on a rate of \$1.30 per therm.

The price you pay may vary depending on your tiered rate and other factors.

Kitchen



Blender

1¢ per 15 minutes
2¢ per 15 minutes

Can Opener

less than 1/2¢ per use
less than 1/2¢ per use

Coffee Maker

3¢ per pot
4¢ per pot

Dishwasher

gas water heater
22¢ per load, without heated dry
34¢ per load, with heated dry
24¢ per load, without heated dry
37¢ per load, with heated dry

electric water heater
47¢ per load, without heated dry
55¢ per load, with heated dry
79¢ per load, without heated dry
91¢ per load, with heated dry

Food Processor

5¢ per hour
9¢ per hour

Iron

9¢ per hour
14¢ per hour

Knife

less than 1/2¢ per 15 minutes
1¢ per 15 minutes

Lighting – Kitchen

48-watt fluorescent tube
up to 1¢ per hour
up to 1¢ per hour
compact fluorescent, 30 watts,
equal to a 150-watt incandescent
less than 1/2¢ per hour
up to 1¢ per hour

Microwave Oven

standard size, 1500 watts
23¢ per hour
38¢ per hour

compact size, 1000 watts
15¢ per hour
25¢ per hour

Oven

electric, cooking
23¢ per hour
38¢ per hour
gas, cooking
13¢ per hour
13¢ per hour
electric, self-cleaning cycle
30¢ per cleaning
50¢ per cleaning
gas, self-cleaning cycle
26¢ per cleaning
26¢ per cleaning

Range Top

electric, small burner,
medium setting
5¢ per hour
8¢ per hour
electric, small burner,
high setting
18¢ per hour
30¢ per hour
gas, medium setting
2¢ per hour
2¢ per hour
gas, high setting

12¢ per hour
12¢ per hour

Refrigerator

(22 cu. ft., side-by-side)

19 years or older, frost-free
\$23.55 per month
\$39.25 per month

standard (2001 or newer)
\$8.40 per month
\$14.00 per month

ENERGY STAR® -
15% more efficient than standard
\$7.14 per month
\$11.90 per month

Toaster

1¢ per use
1¢ per use

Toaster Oven

1¢ per use
2¢ per use

Wine Cooler

\$3.51 per month
\$5.85 per month

Living Room



Air Cleaner

1¢ per hour
1¢ per hour

Air Conditioner

electric, room air, 1/2-ton,
SEER 8.3
11¢ per hour
18¢ per hour

Air Purifier

5¢ per hour
9¢ per hour

Aquarium (includes filter and light)

15-20 gallon
\$2.06 per month*
\$3.43 per month*

25-50 gallon
\$2.70 per month*
\$4.50 per month*

DVD Player

up to 1/2¢ per hour
1¢ per hour

Fireplace Logs

gas
46¢ per hour
46¢ per hour

Fountain (small indoor)

up to 1/2¢ per hour
up to 1/2¢ per hour

Lighting – Track

interior with three lights,
300 watts
5¢ per hour
8¢ per hour
compact fluorescent
with reflector, 13 watts,
equal to a 75-watt incandescent
less than 1/2¢ per hour
less than 1/2¢ per hour

Stereo

2¢ per hour
3¢ per hour

Television

color
2¢ per hour
4¢ per hour
54" plasma
5¢ per hour
8¢ per hour

54" LCD
3¢ per hour
5¢ per hour
54" rear-projection
3¢ per hour
5¢ per hour

VCR

while in use
up to 1¢ per hour
up to 1¢ per hour

Video Games

2¢ per hour
4¢ per hour

* does not include heater

Bedroom/Bathroom



Air Freshener Plug-in
Less than 1/2¢ per month
Less than 1/2¢ per month

Clock
22¢ per month
36¢ per month

Curlers
electric
5¢ per hour
9¢ per hour

curling iron
up to 1¢ per hour
up to 1¢ per hour

Electric Blanket
1¢ per hour
2¢ per hour

Electric Heating Pad
1¢ per hour
2¢ per hour

Electric Shaver
Up to 1/2¢ per hour
1¢ per hour

Hair Dryer
electric
18¢ per hour
30¢ per hour

Night Light
5-7 watts
1¢ per night
2¢ per night

Portable Heater
electric, 1500 watts
23¢ per hour
38¢ per hour

Toothbrush
electric
up to 1/2¢ per day
up to 1¢ per day

Home Office



Answering Machine
\$1.08 per month
\$1.80 per month

Cellular Phone Charger
while charging
up to 1¢ per hour
up to 1¢ per hour

Computer and Monitor
4¢ per hour
6¢ per hour

Computer Laptop
up to 1¢ per hour
up to 1¢ per hour

Computer Printer
while printing
up to 1/2¢ per minute
up to 1/2¢ per minute

Computer Scanner
while in use
less than 1/2¢ per minute
less than 1/2¢ per minute

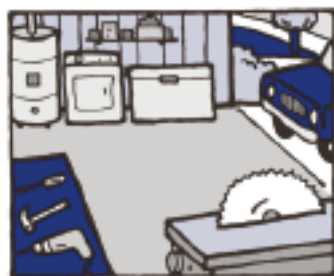
Fax Machine
in use
1¢ per hour
1¢ per hour

on standby
\$2.70 per month
\$4.50 per month

Palm Pilot Charger
less than 1/2¢ per hour
less than 1/2¢ per hour

Sewing Machine
2¢ per hour
3¢ per hour

Garage



Air Compressor
1 hp
4¢ per hour
6¢ per hour

Drill
1¢ per 15 minutes
2¢ per 15 minutes

Dryer
electric
42¢ per 30-minute load
71¢ per 30-minute load

gas
16¢ per 30-minute load
17¢ per 30-minute load

Freezer
manual defrost, 15 cu. ft., chest
\$9.90 per month
\$16.50 per month

frost-free, 15 cu. ft., upright
\$14.48 per month
\$24.13 per month

Furnace Pilot Light
gas
\$9.10 per month
\$9.10 per month

Garage Door Opener
2 times per day
11¢ per month
18¢ per month

Golf Cart Battery Charger
\$1.47 per 18 holes
\$2.94 per 18 holes

Sander
5¢ per hour
9¢ per hour

Screwdriver
less than 1/2¢ per hour
1¢ per hour

Shop Vac
3¢ per hour
5¢ per hour

Table Saw
21¢ per hour
35¢ per hour

Washer
electric water heater
29¢ per load*
48¢ per load*

gas water heater
14¢ per load*
17¢ per load*

Water Heater
electric
\$47.40 per month**
\$79.00 per month**

electric heat pump
\$17.90 per month**
\$29.84 per month**

gas
\$20.07 per month**
\$20.07 per month**

Tankless, electric
\$44.55 per month**
\$74.25 per month**

Tankless, gas
\$14.56 per month**
\$14.56 per month**

* warm wash, cold rinse
** based on 55 gallons per day, household of three

Whole House



Air Conditioner

3-ton central air, SEER 15

36¢ per hour

60¢ per hour

3-ton central air, SEER 12

45¢ per hour

75¢ per hour

3-ton central air, SEER 10

54¢ per hour

90¢ per hour

3-ton central air, SEER 7

77¢ per hour

1.28¢ per hour

Carpet Cleaner

9¢ per hour

14¢ per hour

Chair Lift

while in use

less than 1/2¢ per minute

less than 1/2¢ per minute

Fans

ceiling

2¢ per hour

3¢ per hour

portable

2¢ per hour

3¢ per hour

Heating

electric ceiling

27¢ per room, per hour

45¢ per room, per hour

central heat, electric

\$1.83 per hour*

\$3.05 per hour*

central heat, gas

\$1.09 per hour*

\$1.09 per hour*

Home Elevator

while in use

1¢ per minute

1¢ per minute

House Alarm

\$1.30 per month

\$2.16 per month

Light Bulbs

incandescent, 100 watts

2¢ per hour

3¢ per hour

incandescent, 60 watts

1¢ per hour

2¢ per hour

compact fluorescent,

13-18 watts, equal to a

60-75 watt incandescent

less than 1/2¢ per hour

less than 1/2¢ per hour

Lighting - Porch

incandescent, 100 watts

2¢ per hour

3¢ per hour

compact fluorescent, 27 watts,
equal to a 100-watt incandescent
less than 1/2¢ per hour
less than 1/2¢ per hour

Oxygen Pump

3¢ per hour

6¢ per hour

Vacuum Cleaner

11¢ per hour

19¢ per hour

portable hand-held, rechargeable

less than 1/4¢ per hour of use

less than 1/4¢ per hour of use

Whole-House Fan

1/4 hp

2¢ per hour

3¢ per hour

1/3 hp

3¢ per hour

6¢ per hour

1/2 hp

5¢ per hour

8¢ per hour

* including forced-air furnace fan

Yard



Automatic Sprinkler System

less than 1/2¢ per hour

less than 1/2¢ per hour

Edger

20¢ per hour

33¢ per hour

Fire Pit

gas

98¢ per hour

98¢ per hour

Fountain (outside)

4¢ per hour

6¢ per hour

Lawn Mower

electric

22¢ per hour

36¢ per hour

Lighting - Holiday

standard incandescent -

300 bulbs

27¢ per hour

45¢ per hour

mini light incandescent -

300 bulbs

2¢ per hour

4¢ per hour

LED - 300 bulbs

Less than 1¢ per hour

1¢ per hour

Lighting - Landscape

low-voltage, exterior,

108 watts, six lights

2¢ per hour

3¢ per hour

Lighting - Security

exterior floodlight, 150 watts

2¢ per hour

4¢ per hour

compact fluorescent

with reflector, 27 watts,

equal to a 125-watt incandescent

less than 1/2¢ per hour

less than 1/2¢ per hour

Outdoor Grill

gas

\$1.09 per hour

\$1.09 per hour

Pond with Compressor

1¢ per hour

1¢ per hour

Sauna

90¢ per hour

\$1.50 per hour

Spa

electric

\$5.49 per warm-up*

\$9.15 per warm-up*

electric, after warm-up

36¢ per hour to maintain*

61¢ per hour to maintain*

gas

\$2.34 per warm-up*

\$2.34 per warm-up*

gas, after warm-up

15¢ per hour to maintain*

15¢ per hour to maintain*

Swimming Pool Cleaner

electric, automatic, 3/4 hp

11¢ per hour

18¢ per hour

Swimming Pool Heater

400,000 BTU, gas

\$5.20 per hour

\$5.20 per hour

Swimming Pool Pump Motor

2 hp, electric

28¢ per hour

47¢ per hour

* increase in usage depends on the spa's exposure to the wind



Serving you today.
Planning for tomorrow.®

1-800-411-SDGE (7343)

www.sdge.com

■ "Low-use" electric cost estimates reflect a rate of \$0.15 per kWh.

■ "High-use" electric cost estimates reflect a rate of \$0.25 per kWh.

The price you pay may vary depending on your tiered rate and other factors.